

Races will be held in Swansea Bay

SAILING INSTRUCTION

1 RULES

- 1.1 The series will be governed by the rules as defined in *The Racing Rules of Sailing*.

2 NOTICES TO COMPETITORS

Notices to competitors will be posted on the official notice board located in SYSAC club porch.

3 CHANGES TO SAILING INSTRUCTIONS

Any change to the sailing instructions will be announced over the radio on channel 37(M)

4. SCHEDULE OF RACES

- 4.1. Dates of racing:

Please see the racing calendar posted on the SYSAC web site

- 4.3 The scheduled time of the warning signal for the first race will be as soon as practicable after all boats have exited the locks to save boats milling around in inclement weather.**

- 4.4 After a long postponement, to alert boats that a race or sequence of races will begin soon, an announcement will be made over **VHF CH37**

6. RACING AREAS

Attachment B shows the location of racing areas.

7. THE COURSES

- 7.1 Courses will be announced by the OD. The OD to be decided on the day of the race and the information broadcast on VHF CH37

- 7.3 Courses will be shortened by an announcement over VHF CH37.

8. MARKS

- 8.1 Laid marks will be white or orange bouys

SWIG – south cardinal 51°34'09N 03°57'01W

Outer Green Fairway bouy 51°34'48N 03°56'20

Mid Green Fairway bouy 51°35'57N 03°56'20

Red Fairway bouy 51°35'53N 03°56'16

Inner Green Fairway bouy 51°36'22N 03°55'54

Hyder – southern most yellow round bouy 51°35'39N 03°54'09

White Oyster Ledge – cardinal mark 51°31'N 04°00W

West Scarweather – cardinal mark 51°28'N 03°55W

10. THE START

10.1 Races will be started as follows:

The starting sequence will be given over VHF CH37 and with a sound signal. The committee boat will be announced on the day.

There will be one start for all boats.

There will be a 5 minute warning

4 minute warning

1 minute warning

Start signal

10.2 The starting line will be laid by the committee boat

10.4 An attempt to notify boats over the line at the start will be made by VHF

11. THE FINISH

The finishing line will be the start line unless otherwise announced over the radio

12. PENALTY SYSTEM

12.1 For the classes 1 & 2 rule 44.1 is changed so that the Two-Turns Penalty is replaced by the One-Turn Penalty.

13. PROTESTS AND REQUESTS FOR REDRESS

13.1 Protest forms are available from Foxtrot. Protests and requests for redress or reopening shall be delivered there within the appropriate time limit.

13.2 For each class, the protest time limit is 30 minutes after the last boat has finished the last race of the day.

13.3 Notices will be posted no later than 30 minutes after the protest time limit to inform competitors of hearings in which they are parties or named as witnesses. Hearings will be held in the protest room, located at SYSAC club house, beginning 2 hours after the last race of the day finishes

13.4 Decisions of the protest committee will be final as provided in rule 70.5.

14. SCORING

14.1 The scoring system is as follows: the standard low points system.

All boats will use the Byron handicap system

15. SAFETY REGULATIONS

A boat that retires from a race shall notify the race committee as soon as possible.

16. TRASH DISPOSAL

Boats shall not put trash in the water. Trash may be placed aboard support and race committee boats.

17. RADIO COMMUNICATION

Except in an emergency, a boat shall neither make radio transmissions while racing nor receive radio communications not available to all boats. This restriction also applies to mobile telephones.

18. DISCLAIMER OF LIABILITY

Competitors participate in the race entirely at their own risk. See rule 4, Decision to Race. The organizing authority will not accept any liability for material damage or personal injury or death sustained in conjunction with or prior to, during, or after the race.

19. INSURANCE

Each participating boat shall be insured with valid third-party liability insurance with a minimum cover of £2 million.

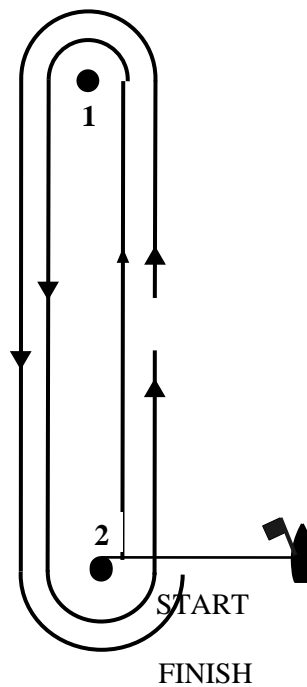
Appendix A

ILLUSTRATING THE COURSE

Shown here are diagrams of course shapes. The boat's track is represented by a discontinuous line so that each diagram can describe courses with different numbers of laps. If more than one course may be used for a class, state how each particular course will be signalled.

A Windward-Leeward Course

Start – 1 – 2 – 1 – 2 – Finish



Options for this course include

- (1) increasing or decreasing the number of laps,*

Appendix 2 Race Area

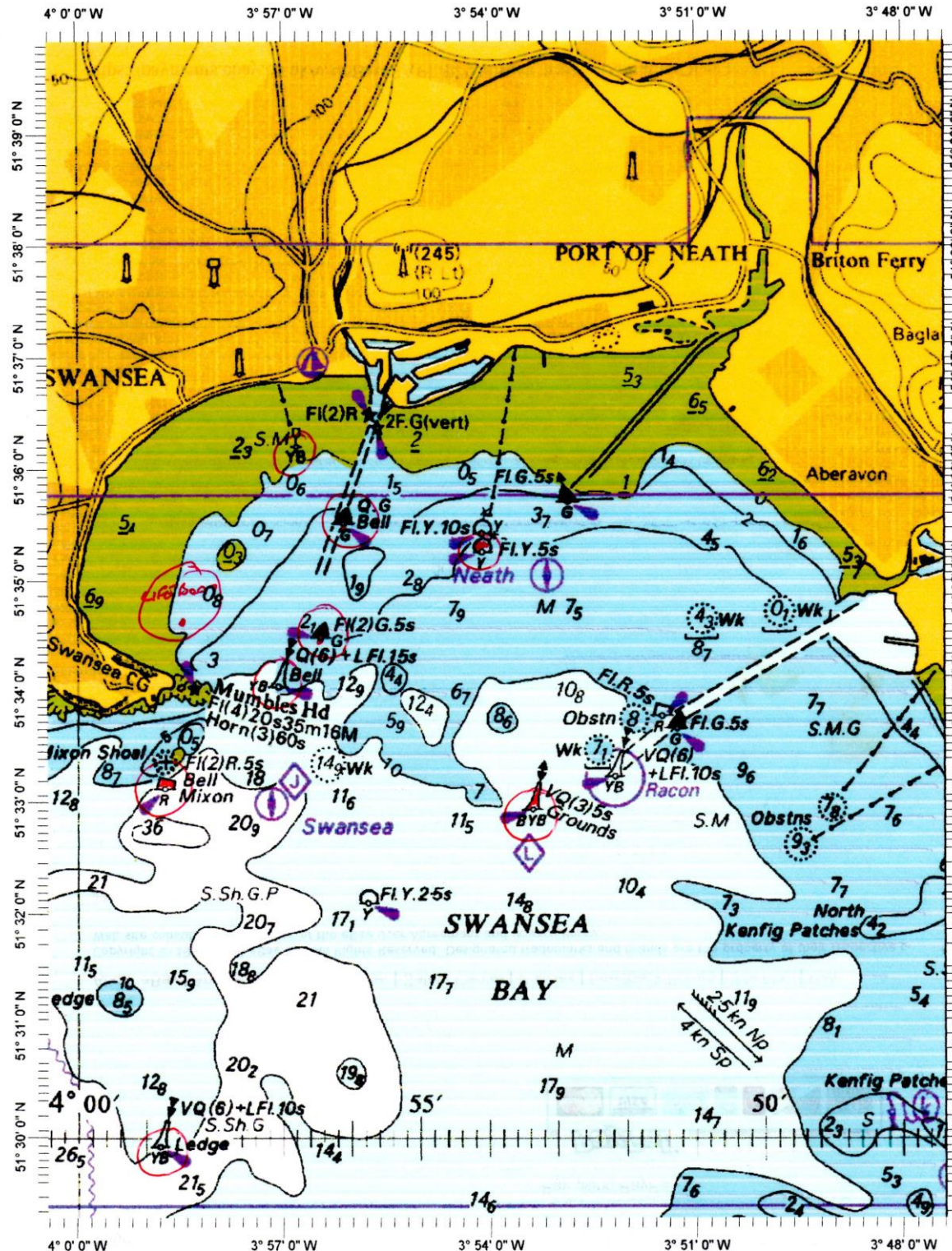


Chart Name: BRISTOL CHANNEL
Chart ID: BA1179 1
Top Left: 51° 39' 50" N 4° 0' 25" W
Bottom Right: 51° 29' 16" N 3° 47' 22" W